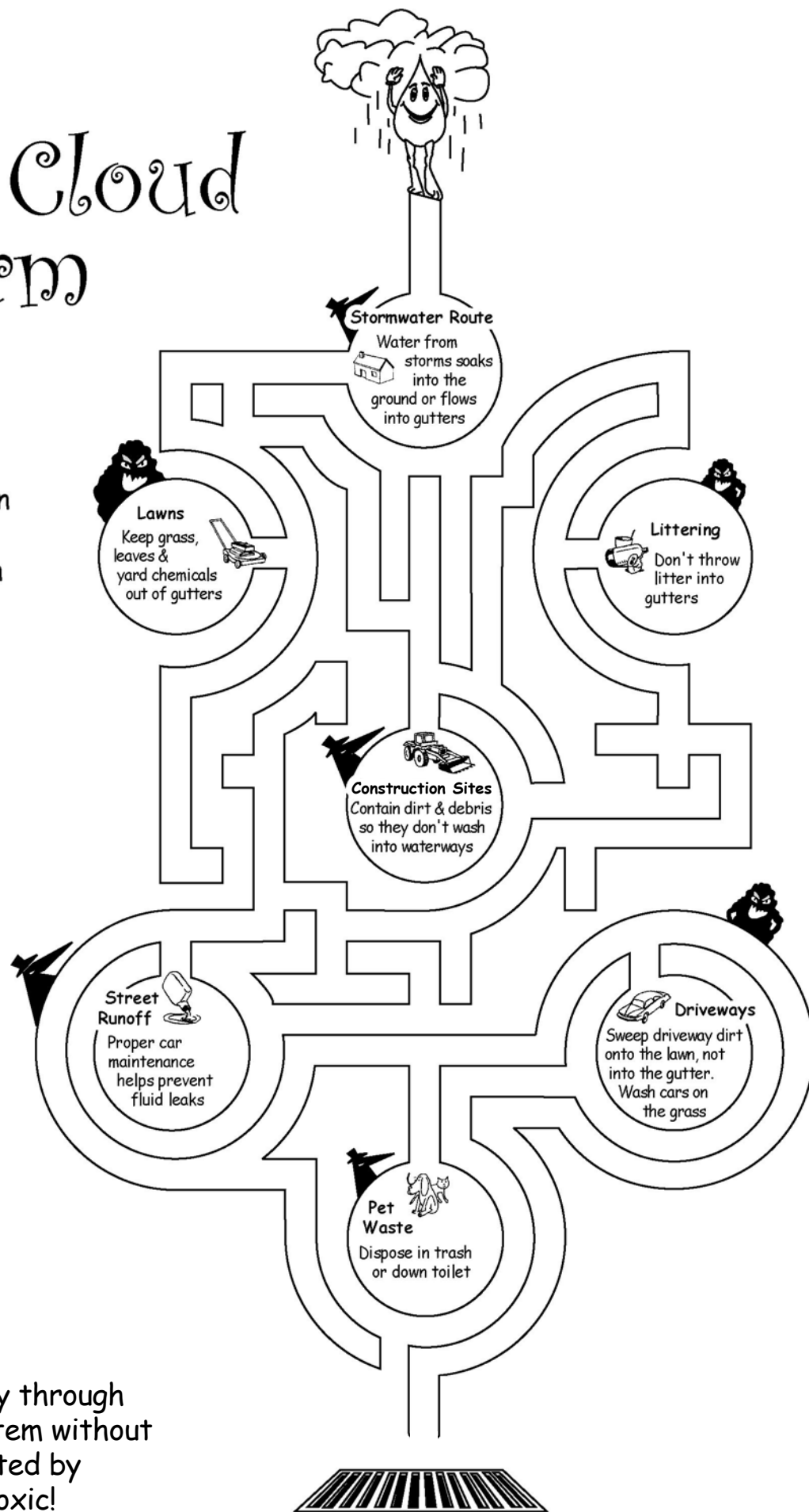


# From Storm Cloud to Storm Drain

The Stormwater system channels rain and snowmelt into gutters, which drain into streams and rivers. When people pollute stormwater, they also pollute our natural waterways.

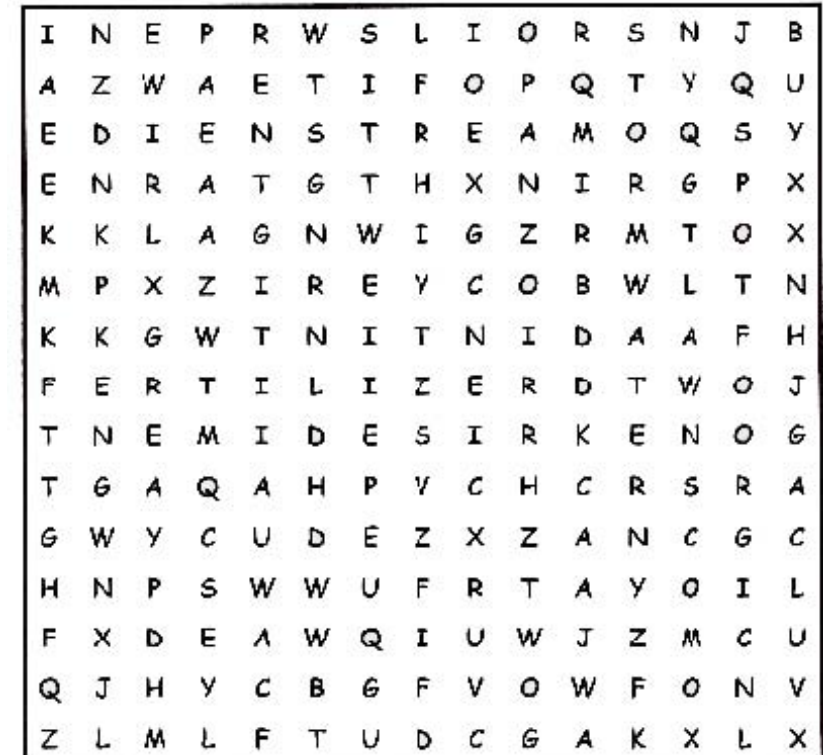


Help Droplet journey through the stormwater system without becoming contaminated by Mr. Sludge or Mr. Toxic!

Adapted from stormwatercaalition.org

# Pollution

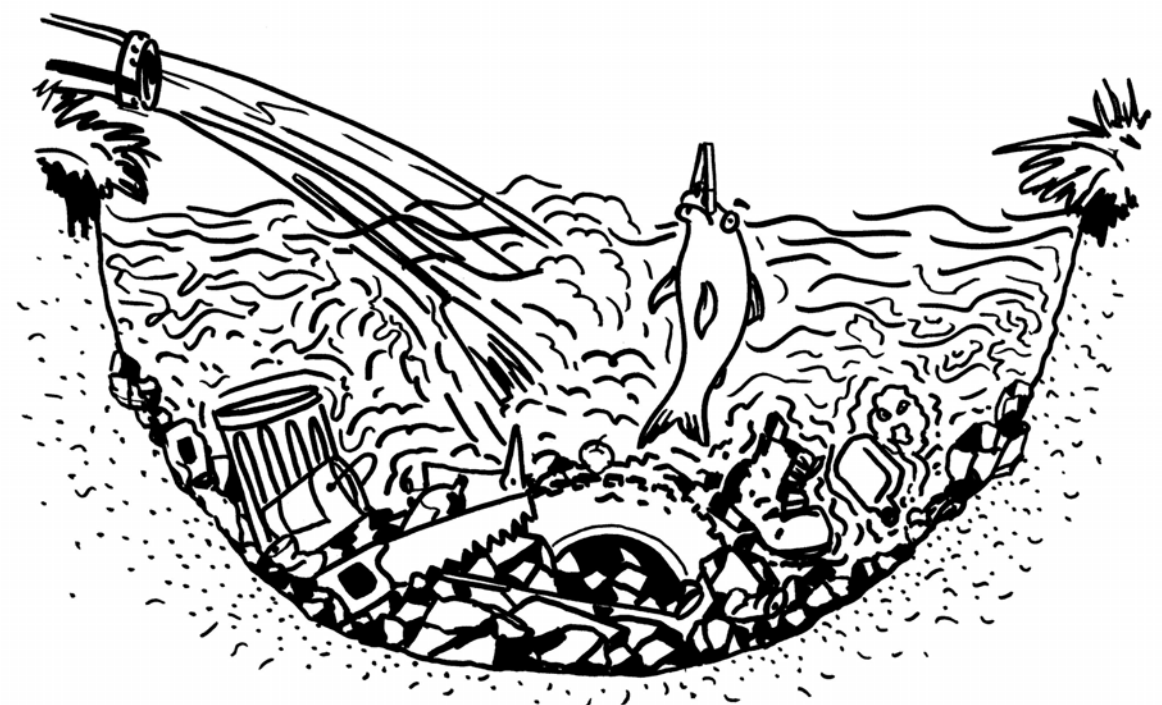
- CONCRETE
- DRAIN
- DRIVEWAY
- FERTILIZER
- LAWN
- OIL
- PESTICIDES
- PLANTS
- RAIN
- ROOFTOPS
- SEDIMENT
- STORMWATER
- STREAM



Adapted from EPA

# Eliminating Trash From Our Streams

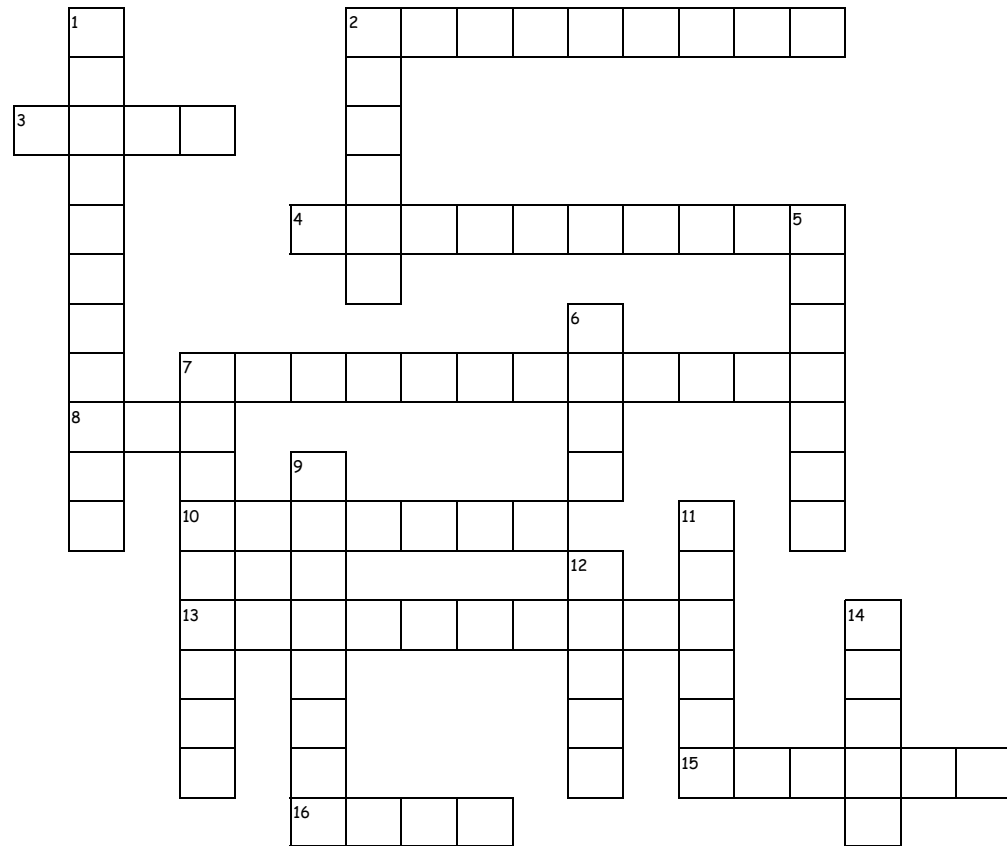
Help Droplet clean this stream. What doesn't belong? Can you find all of the hidden trash pictured here? → Circle or color the trash.



Adapted from stormwatercaalition.org

# Water Cross

# Color the Watershed!



**Across:**

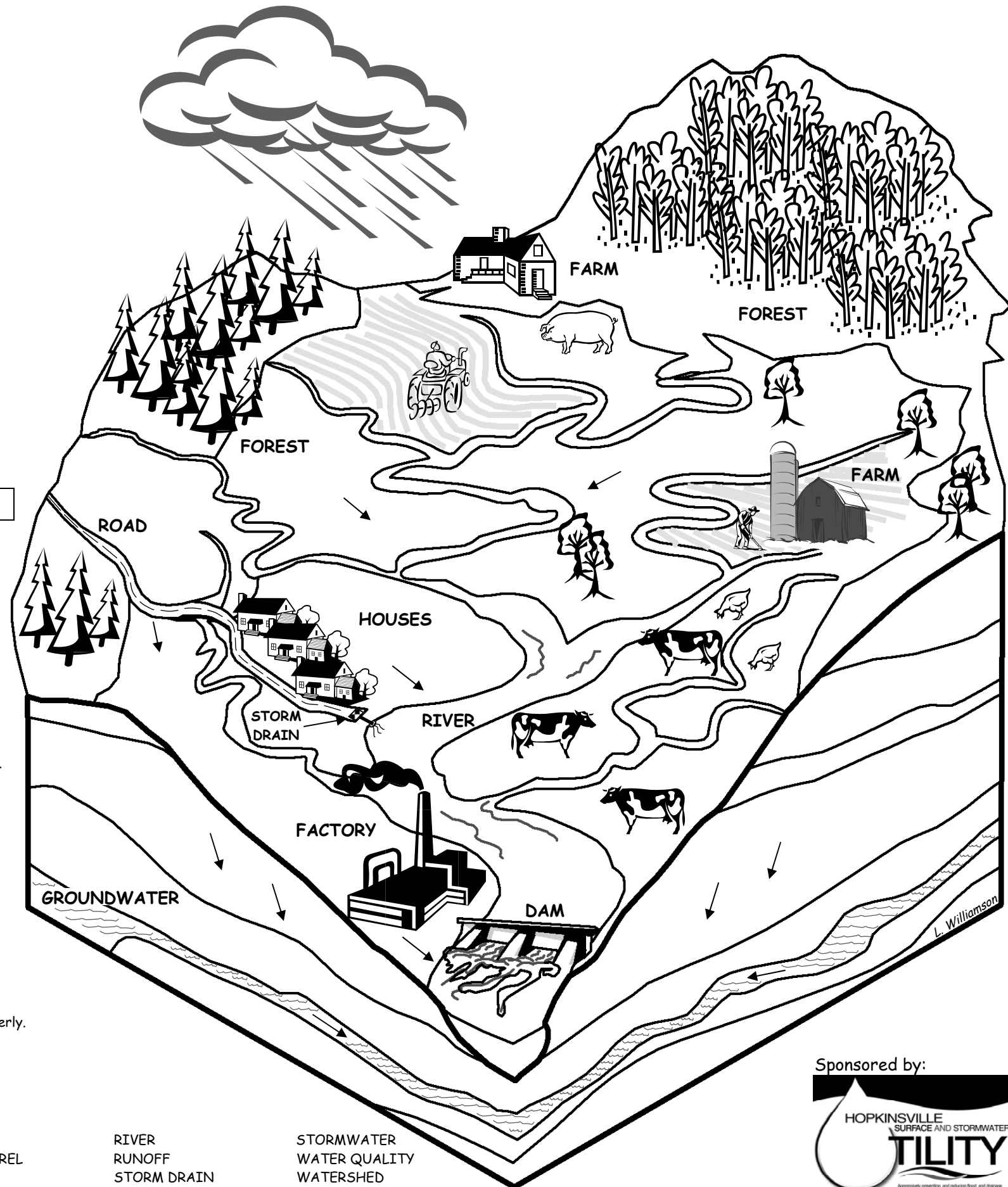
- 2) Sediment, nutrients, and toxic chemicals are types of \_\_\_\_\_.
- 3) \_\_\_\_\_ can suffer when the water they swim in becomes polluted.
- 4) \_\_\_\_\_ is rainwater that runs off instead of soaking into the soil.
- 7) The characteristics of water for a particular use is known as \_\_\_\_\_.
- 8) This government agency oversees our environment (nickname).
- 10) \_\_\_\_\_ of soil from barren land can cloud nearby streams.
- 13) Water that enters a \_\_\_\_\_ flows directly, untreated, to our rivers and streams.
- 15) Trees in a \_\_\_\_\_ help absorb stormwater runoff.
- 16) Leave grass clippings on your \_\_\_\_\_ and fertilize only as needed, and never before a rain!

**Down:**

- 1) A \_\_\_\_\_ captures stormwater from the roof for later use in the garden.
- 2) \_\_\_\_\_ help filter pollutants from stormwater and provide habitat for wildlife.
- 5) Do not dump used motor oil down storm drains, instead \_\_\_\_\_ it!
- 6) \_\_\_\_\_ becomes stormwater when it runs off the land instead of soaking in the ground.
- 7) The area of land that drains into a lake, river, or groundwater is a \_\_\_\_\_.
- 9) A single quart of \_\_\_\_\_ can pollute 2 million gallons of water if disposed of improperly.
- 11) Stormwater \_\_\_\_\_ is rain that does not soak into the ground.
- 12) \_\_\_\_\_ need to manage their crops and animals properly to prevent water pollution.
- 14) Our city's storm drains flow directly into the \_\_\_\_\_ where fish and people swim.

**Word Choices:**

- |         |        |           |             |             |               |
|---------|--------|-----------|-------------|-------------|---------------|
| EPA     | FISH   | MOTOR OIL | RAIN        | RIVER       | STORMWATER    |
| EROSION | FOREST | PLANTS    | RAIN BARREL | RUNOFF      | WATER QUALITY |
| FARMS   | LAWN   | POLLUTION | RECYCLE     | STORM DRAIN | WATERSHED     |



Sponsored by:

